



Foreign, Commonwealth
& Development Office

Weather and Climate Programmes

Katherine Marsden
FCDO Climate Science Adviser

UN CLIMATE
CHANGE
CONFERENCE
UK 2021

IN PARTNERSHIP WITH ITALY

The Adaptation Research Alliance





ARA Mission

To accelerate and scale investments in **action-oriented research in developing countries**, that addresses the pressing knowledge needs for adaptation and **resilience of the most vulnerable**, **builds capacity** at all stages from research to action, **strengthens research-implementation linkages**, and promotes greater learning.

ADAPTATION RESEARCH FOR **IMPACT** PRINCIPLES

Research is needs-driven, solutions-oriented and leads to a positive impact on the lives of those at risk from climate change.
[Who or what is the research for?]

Research is transdisciplinary and co-produced with users
[How should research be carried out?]

Research emphasises societal impact.
[How is research valued?]

Research builds capacity and empowers actors for the long-term
[What can research enable?]

Research processes address structural inequities that lead to increased vulnerability and reduced adaptive capacity of those at risk.
[How can research address root causes of risk?]

Learning-while-doing enables adaptation action to be evidence-based and increasingly effective.
[How can research-action links be strengthened?]

REALISING THE VISION

User-centered,
solution-oriented
research

- Consultative processes to identify needs & opportunities

Building capacity
for action
research

- Micro-grants to broaden and deepen engagement

Collaboration,
coordination and
co-creation

- Partnerships, sharing & learning





CLIMATE ADAPTATION AND RESILIENCE (CLARE)

CLIMATE ADAPTATION AND RESILIENCE (CLARE)

CLARE is a **research framework programme** supporting adaptation through **action-oriented research** and enabling **capacity** to build resilience, address knowledge gaps, and boost the response to the climate crisis in the Global South.

CLARE enables **socially inclusive** and **sustainable action** to **build resilience** and **reduce vulnerability** to risk from climate change and natural hazards for the most vulnerable

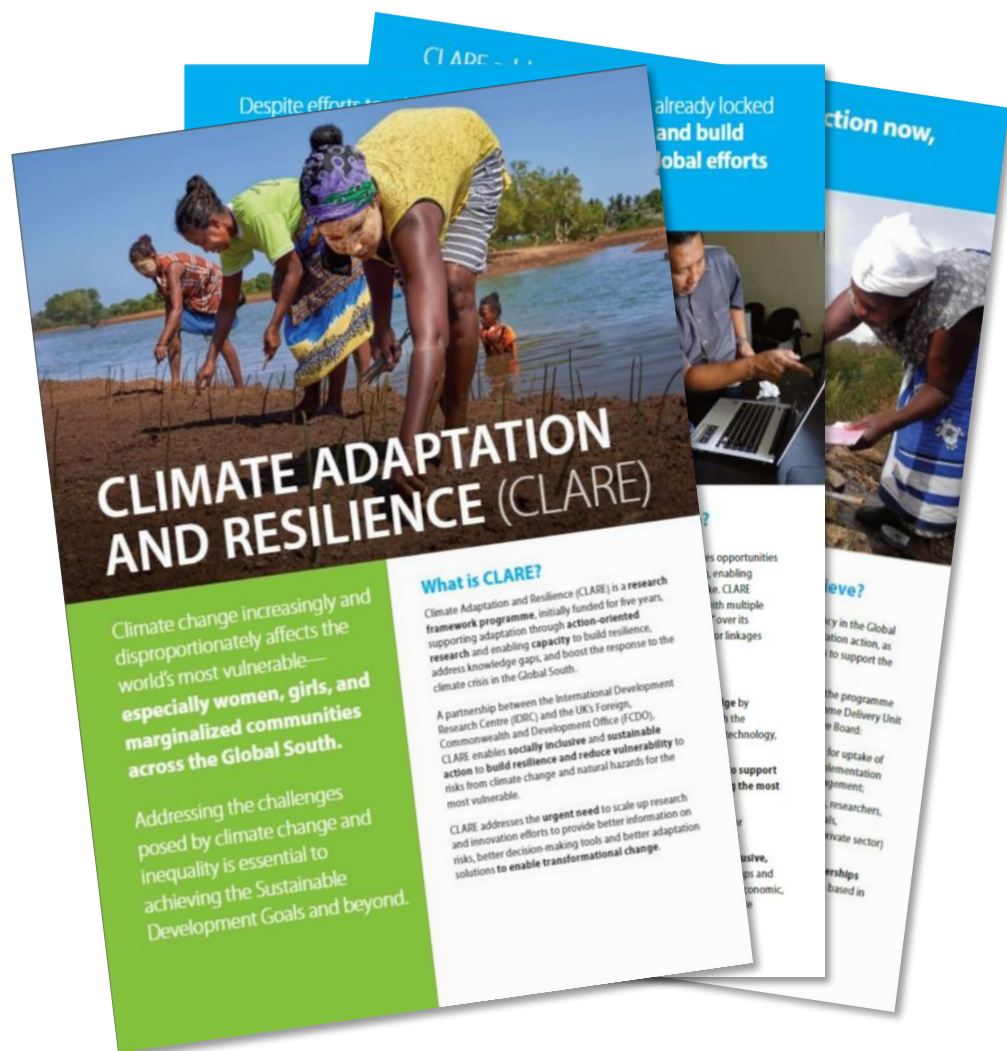
CLARE addresses the **urgent need** to scale up research and innovation efforts to provide better information on risks, better decision-making tools and better adaptation solutions **to enable transformational change**



A partnership between the Canada's International Development Research Centre and the UK's Foreign, Commonwealth and Development Office



CLIMATE ADAPTATION AND RESILIENCE (CLARE)



CLARE addresses the urgent need for action now, while also anticipating future needs.

CLARE will operate as a portfolio programme with multiple competitive research “calls for proposals”.

Calls may cover single, multiple, or linkages between themes.

Three key research areas inform CLARE’s efforts:

- Understanding climate risk,
- Risk-informed early action and
- Developing in a changing climate

<https://www.idrc.ca/en/CLARE>



Supported by:



Weather and Climate Information Services for Africa (WISER)

The WISER programme's mission is to make a step change in the quality, accessibility and use of weather and climate information services at all levels of decision making for sustainable development in Africa.

www.metoffice.gov.uk/wiser

Thank you